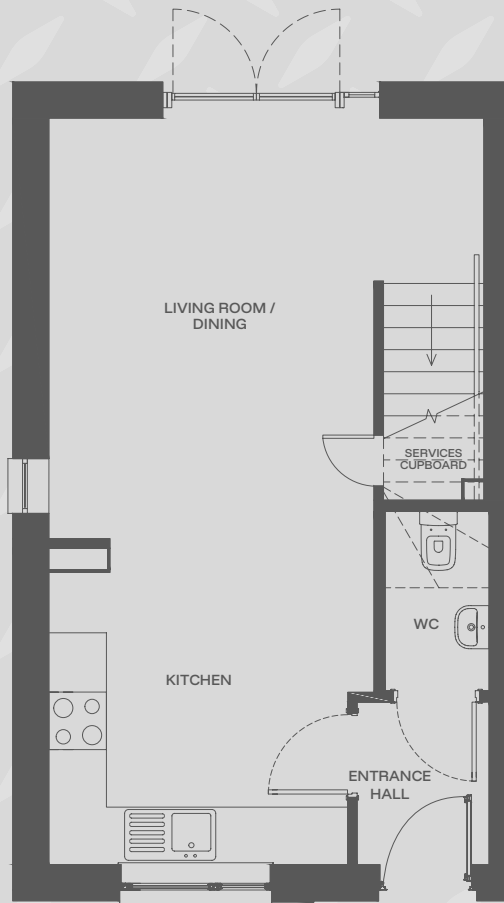


The ARROL

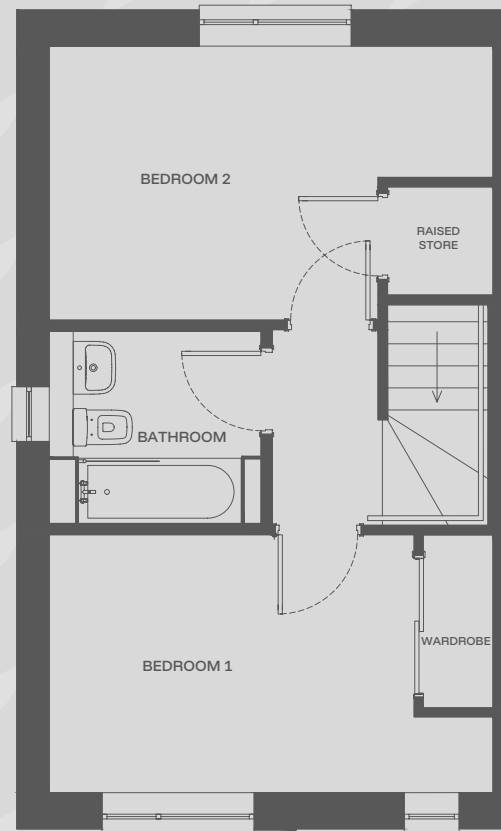
2 bedroom (end terrace)

71.3m² / 767ft²



→ GROUND FLOOR

Living / Dining	4.53m x 4.38m
Kitchen	3.40m x 3.38m
Entrance Hall	1.69m x 1.37m
WC	1.86m x 1.08m



→ FIRST FLOOR

Bedroom 1	4.62m x 2.69m
Bedroom 2	4.62m x 2.85m
Bathroom	2.20m x 2.00m

Plot numbers: 8*, 14, 22*, 25, 36 & 39*

*These plots are handed

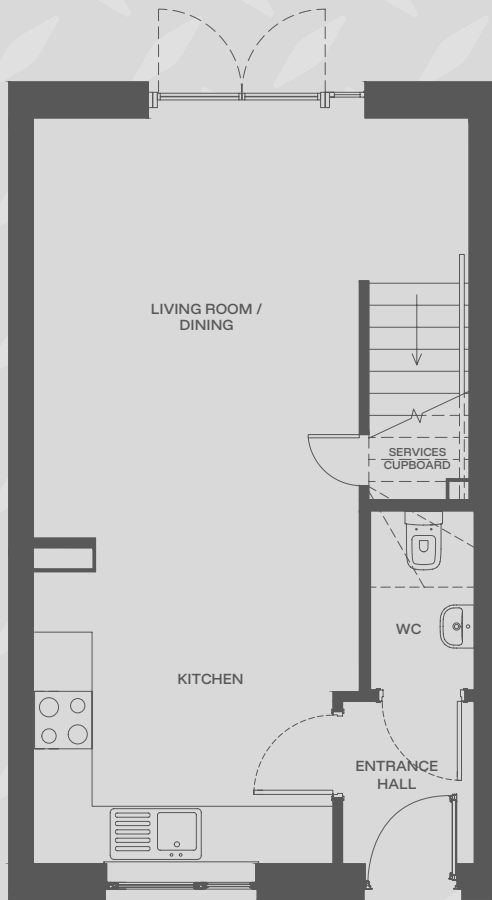
The floorplan provided is of a typical house style. Some elements of the detailing have been digitally enhanced and may vary to that found at Dalmarnock Quarter. Your sales consultant will be able to provide you with the full details of each plot and house type in this brochure. The particular illustrations and plans presented in this brochure are intended to give a fair description of the property but their accuracy is not guaranteed and they do not form part of any contract. CCG Homes reserve the right to alter property dimensions and specification as necessary.



The ARROL

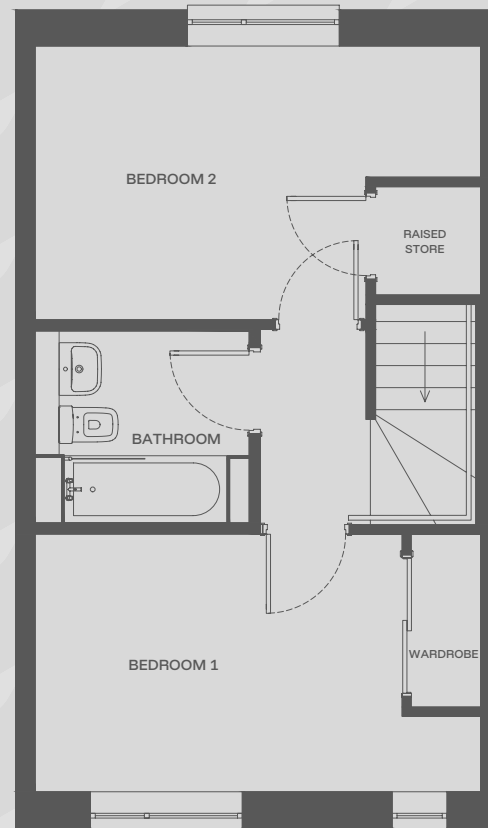
2 bedroom (mid terrace)

71.6m² / 770ft²



→ GROUND FLOOR

Living / Dining	4.54m x 4.38m
Kitchen	3.40m x 3.40m
Entrance Hall	1.69m x 1.37m
WC	1.86m x 1.08m



→ FIRST FLOOR

Bedroom 1	4.64m x 2.69m
Bedroom 2	4.64m x 2.85m
Bathroom	2.20m x 2.00m

Plot number: 9, 10, 11, 12, 13, 23, 24, 37 & 38

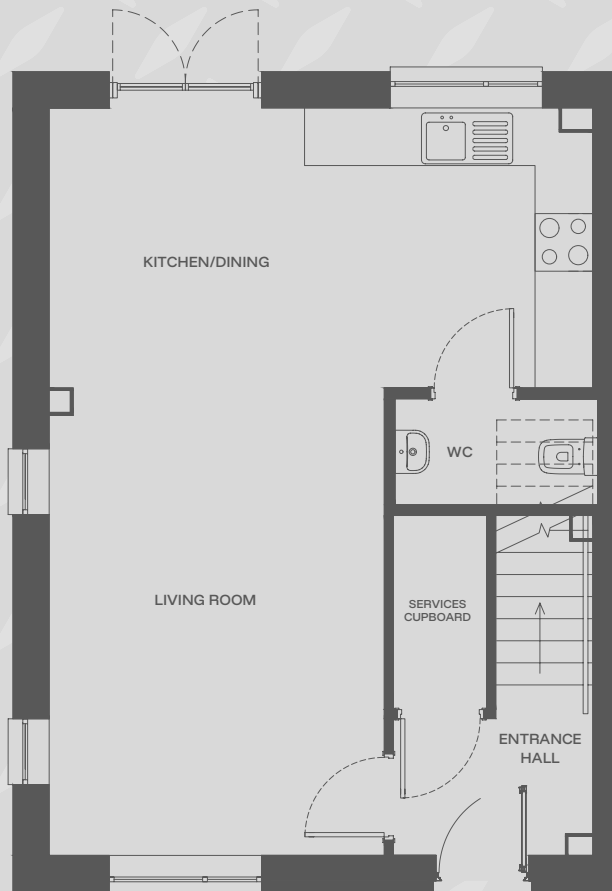
The floorplan provided is of a typical house style. Some elements of the detailing have been digitally enhanced and may vary to that found at Dalmarloch Quarter. Your sales consultant will be able to provide you with the full details of each plot and house type in this brochure. The particular illustrations and plans presented in this brochure are intended to give a fair description of the property but their accuracy is not guaranteed and they do not form part of any contract. CCG Homes reserve the right to alter property dimensions and specification as necessary.



The McCALL (1)

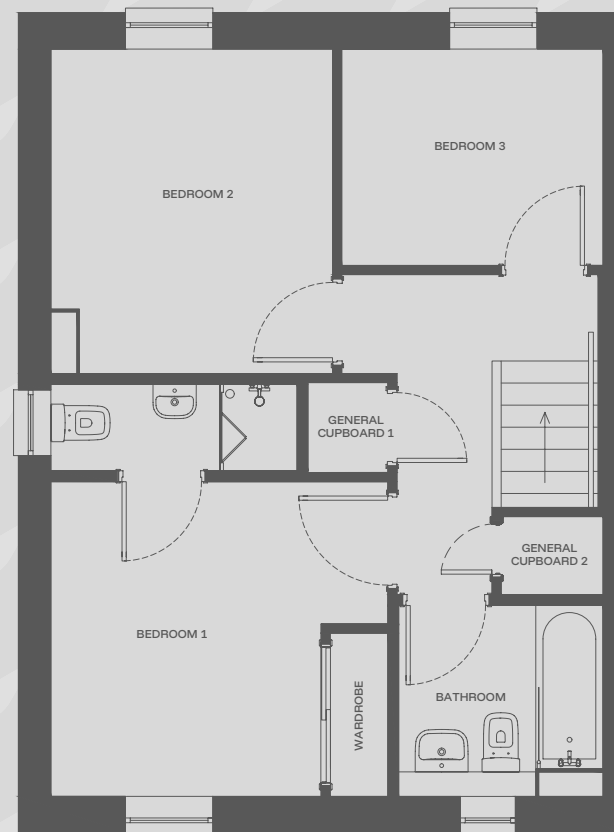
3 bedroom (end terrace)

87m² / 936ft²



→ GROUND FLOOR

Living Room	4.87m x 3.48m
Kitchen / Dining	5.65m x 2.91m
Entrance Hall	2.07m x 1.42m
WC	2.10m x 1.10m



→ FIRST FLOOR

Bedroom 1	3.50m x 3.27m
Bedroom 2	3.38m x 2.93m
Bedroom 3	2.70m x 2.25m
Bathroom	2.12m x 1.99m
En-suite	2.56m x 0.90m

Plot numbers: 1, 7*, 15*, 21, 30, 35*, 103 & 108*

*These plots are handed

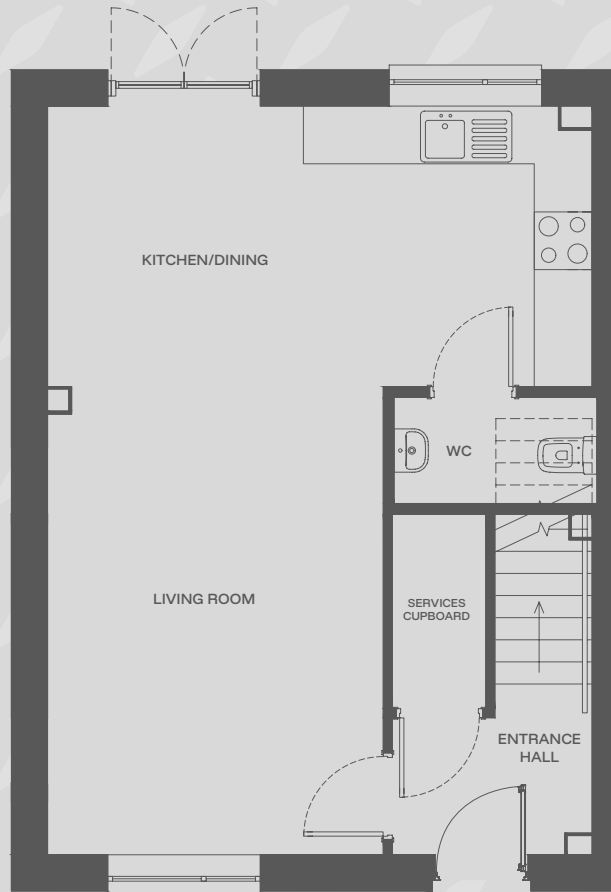
The floorplan provided is of a typical house style. Some elements of the detailing have been digitally enhanced and may vary to that found at Dalmarnock Quarter. Your sales consultant will be able to provide you with the full details of each plot and house type in this brochure. The particular illustrations and plans presented in this brochure are intended to give a fair description of the property but their accuracy is not guaranteed and they do not form part of any contract. CCG Homes reserve the right to alter property dimensions and specification as necessary.



The McCALL (1)

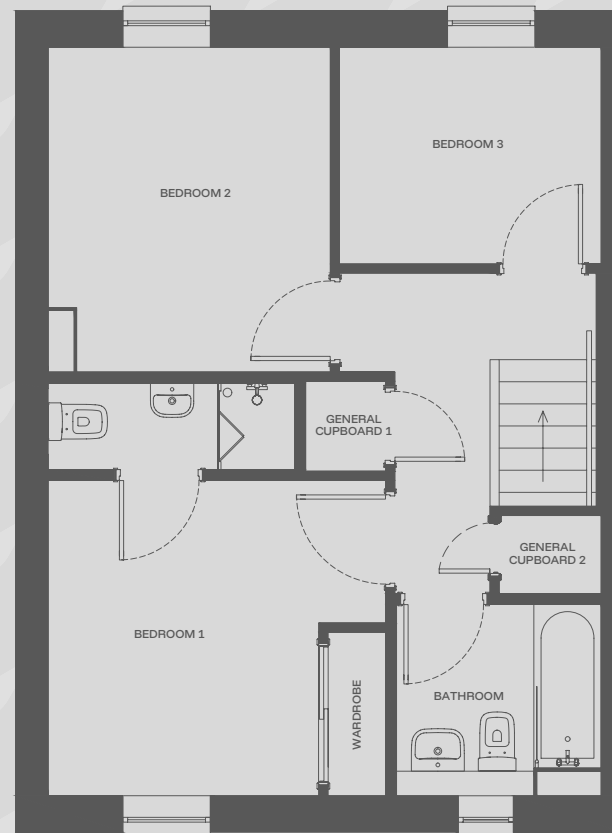
3 bedroom (mid terrace)

87.2m² / 938ft²



→ GROUND FLOOR

Living Room	4.87m x 3.38m
Kitchen / Dining	5.58m x 2.91m
Entrance Hall	2.07m x 1.42m
WC	2.10m x 1.10m



→ FIRST FLOOR

Bedroom 1	3.41m x 3.27m
Bedroom 2	3.38m x 2.84m
Bedroom 3	2.70m x 2.25m
Bathroom	2.12m x 1.99m
En-suite	2.56m x 0.90m

Plot numbers: 3, 5, 17, 19, 32 & 105

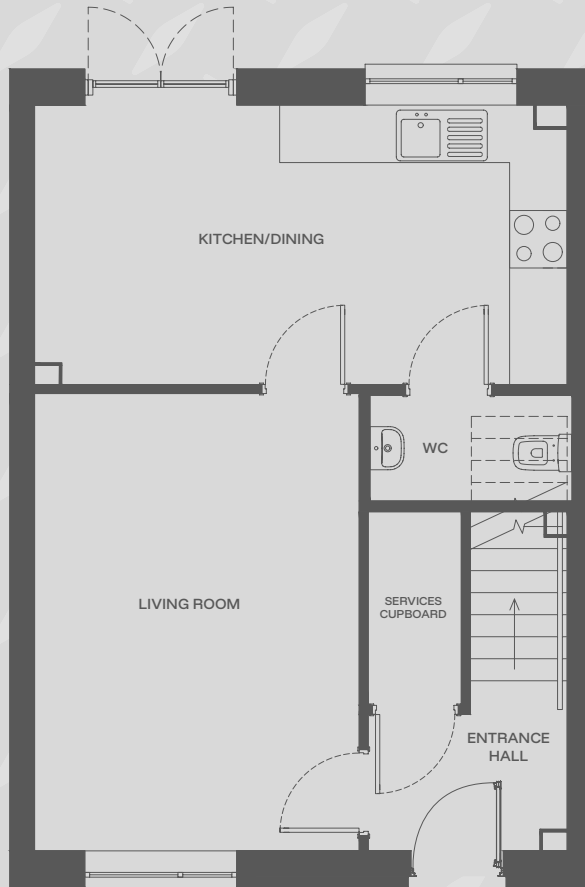
The floorplan provided is of a typical house style. Some elements of the detailing have been digitally enhanced and may vary to that found at Dalmarnock Quarter. Your sales consultant will be able to provide you with the full details of each plot and house type in this brochure. The particular illustrations and plans presented in this brochure are intended to give a fair description of the property but their accuracy is not guaranteed and they do not form part of any contract. CCG Homes reserve the right to alter property dimensions and specification as necessary.



The McCALL (2)

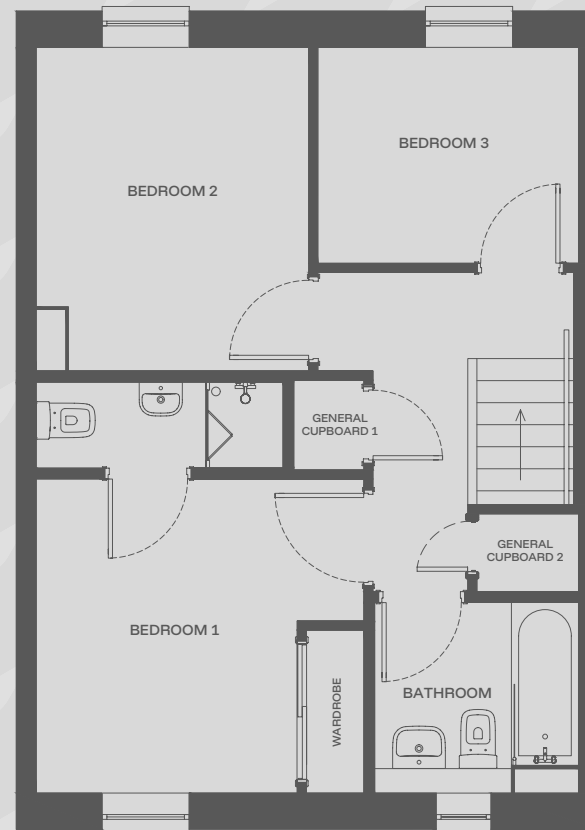
3 bedroom (mid terrace)

87.2m² / 938ft²



→ GROUND FLOOR

Living Room	4.77m x 3.38m
Kitchen / Dining	5.55m x 2.91m
Entrance Hall	2.07m x 1.42m
WC	2.10m x 1.10m



→ FIRST FLOOR

Bedroom 1	3.41m x 3.27m
Bedroom 2	3.38m x 2.84m
Bedroom 3	2.70m x 2.25m
Bathroom	2.12m x 1.99m
En-suite	2.56m x 0.90m

Plot numbers: 2, 4, 6, 16, 18, 20, 31, 33, 34, 104, 106 & 107

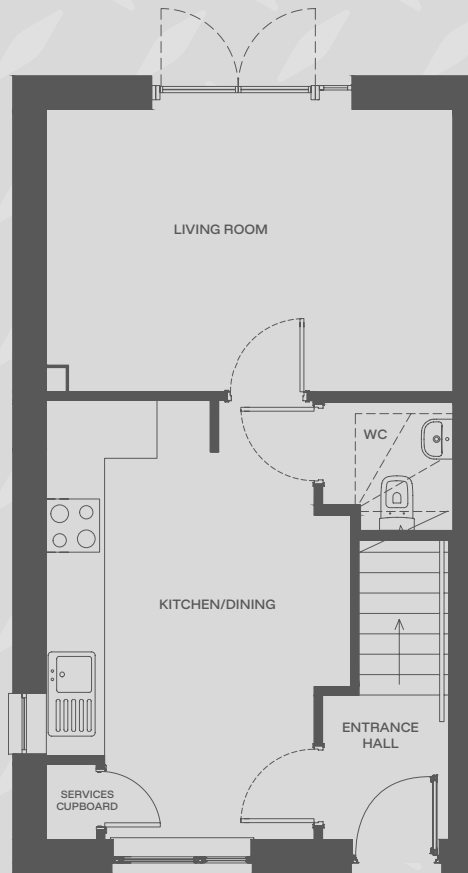
The floorplan provided is of a typical house style. Some elements of the detailing have been digitally enhanced and may vary to that found at Dalmarnock Quarter. Your sales consultant will be able to provide you with the full details of each plot and house type in this brochure. The particular illustrations and plans presented in this brochure are intended to give a fair description of the property but their accuracy is not guaranteed and they do not form part of any contract. CCG Homes reserve the right to alter property dimensions and specification as necessary.



The MONTEITH (1)

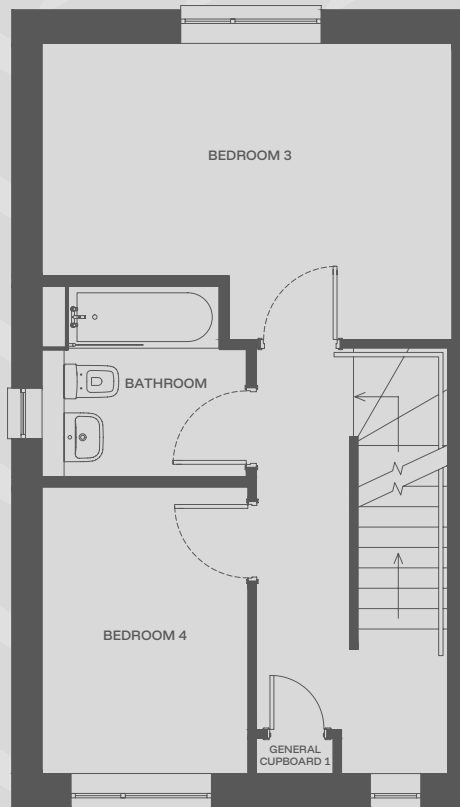
4 bedroom (end terrace)

113.2m² / 1,218ft²



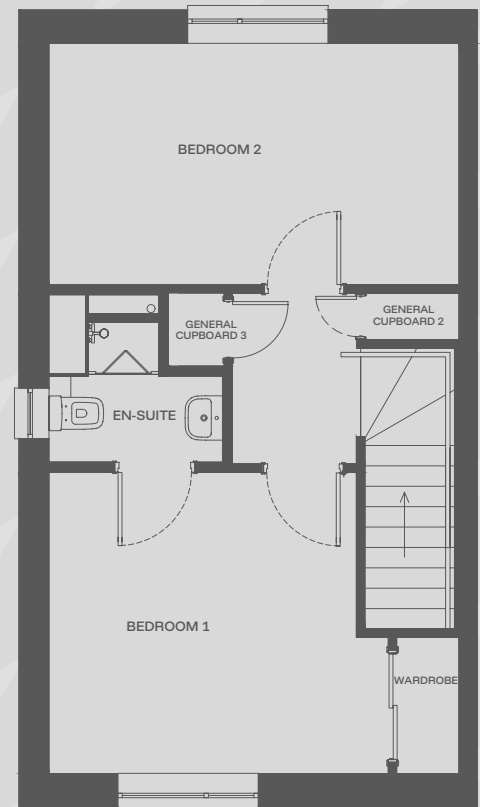
→ GROUND FLOOR

Living Room	4.58m x 3.18m
Kitchen / Dining	4.93m x 3.43m
Entrance Hall	1.63m x 1.41m
WC	1.69m x 1.50m



→ FIRST FLOOR

Bedroom 3	4.62m x 3.34m
Bedroom 4	3.23m x 2.32m
Bathroom	2.30m x 2.15m



→ SECOND FLOOR

Bedroom 1	4.62m x 3.39m
Bedroom 2	4.62m x 2.72m
En-suite	1.95m x 1.79m

Plot numbers: 26*, 29, 40, 42*, 109* & 114

*These plots are handed

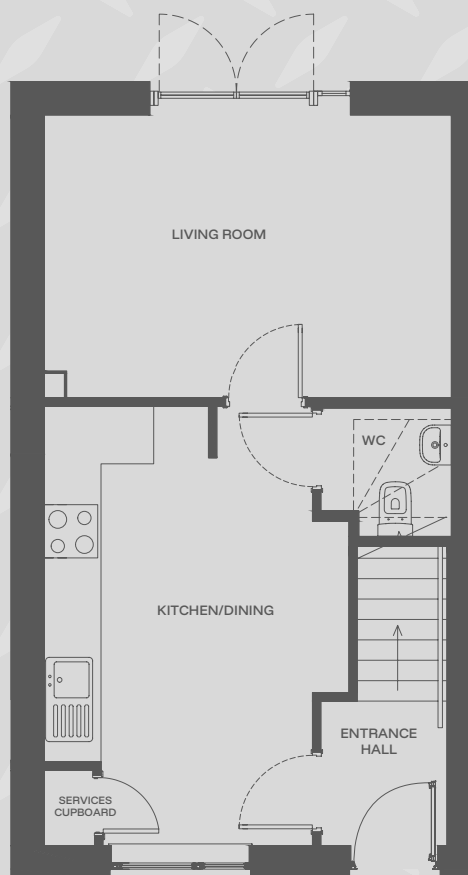
The floorplan provided is of a typical house style. Some elements of the detailing have been digitally enhanced and may vary to that found at Dalmarnock Quarter. Your sales consultant will be able to provide you with the full details of each plot and house type in this brochure. The particular illustrations and plans presented in this brochure are intended to give a fair description of the property but their accuracy is not guaranteed and they do not form part of any contract. CCG Homes reserve the right to alter property dimensions and specification as necessary.



The MONTEITH (1)

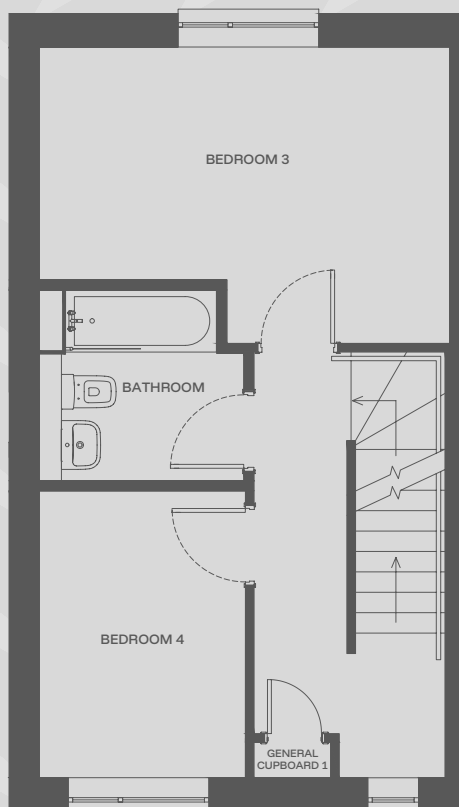
4 bedroom mid terrace

113,7m² / 1,223ft²



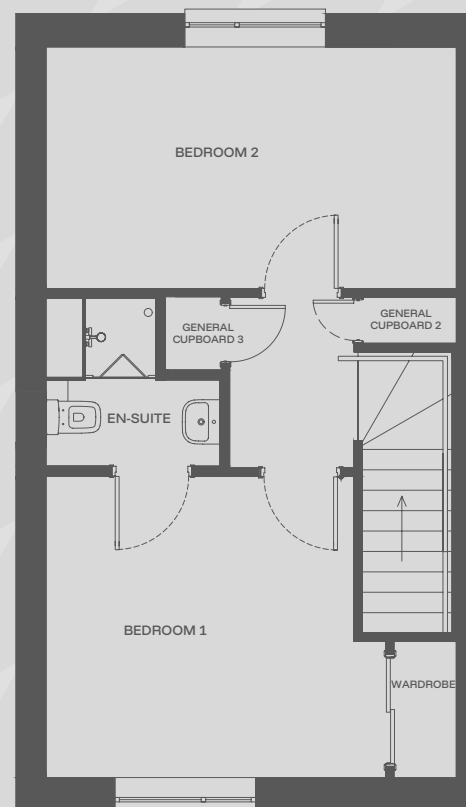
→ GROUND FLOOR

Living Room	4.59m x 3.18m
Kitchen / Dining	4.93m x 3.44m
Entrance Hall	1.63m x 1.41m
WC	1.46m x 1.50m



→ FIRST FLOOR

Bedroom 3	4.64m x 3.34m
Bedroom 4	3.23m x 2.34m
Bathroom	2.32m x 2.15m



→ SECOND FLOOR

Bedroom 1	4.64m x 3.39m
Bedroom 2	4.64m x 2.72m
En-suite	1.98m x 1.79m

Plot number: 111

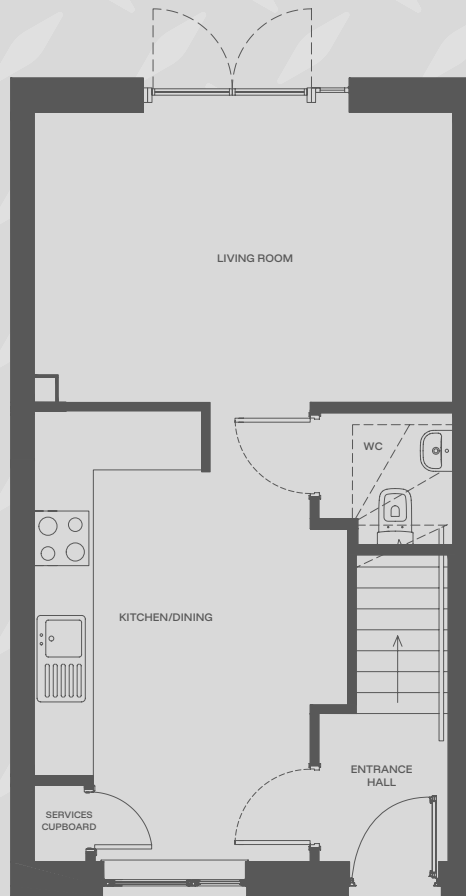
The floorplan provided is of a typical house style. Some elements of the detailing have been digitally enhanced and may vary to that found at Dalmarnock Quarter. Your sales consultant will be able to provide you with the full details of each plot and house type in this brochure. The particular illustrations and plans presented in this brochure are intended to give a fair description of the property but their accuracy is not guaranteed and they do not form part of any contract. CCG Homes reserve the right to alter property dimensions and specification as necessary.



The MONTEITH (2)

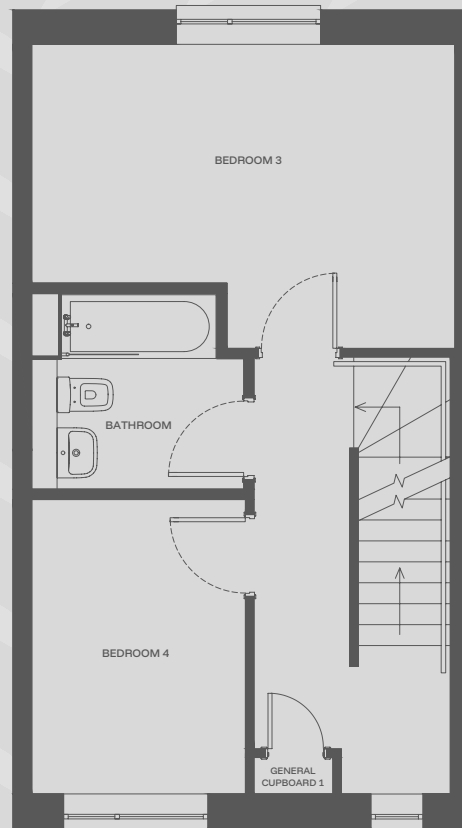
4 bedroom mid terrace

113.7m² / 1,223ft²



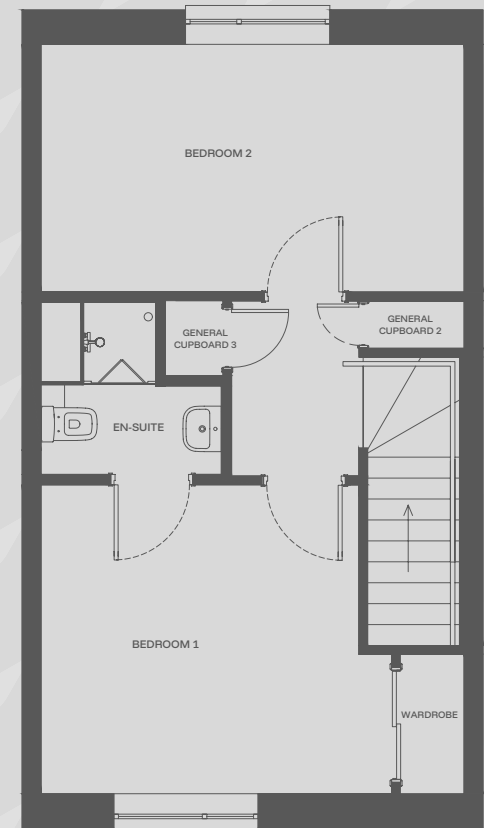
→ GROUND FLOOR

Living Room	4.59m x 3.18m
Kitchen / Dining	5.02m x 3.44m
Entrance Hall	1.63m x 1.41m
WC	1.46m x 1.50m



→ FIRST FLOOR

Bedroom 3	4.64m x 3.34m
Bedroom 4	3.23m x 2.34m
Bathroom	2.32m x 2.15m



→ SECOND FLOOR

Bedroom 1	4.64m x 3.39m
Bedroom 2	4.64m x 2.72m
En-suite	1.98m x 1.79m

Plot number: 27, 28, 41, 110, 112 & 113

The floorplan provided is of a typical house style. Some elements of the detailing have been digitally enhanced and may vary to that found at The Scholars. Your sales consultant will be able to provide you with the full details of each plot and house type in this brochure. The particular illustrations and plans presented in this brochure are intended to give a fair description of the property but their accuracy is not guaranteed and they do not form part of any contract. CCG Homes reserve the right to alter property dimensions and specification as necessary.

